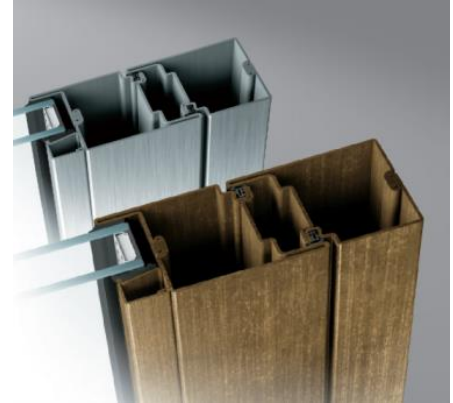


**ITEM CODE: 16021-3D-130 SERIES
ADJUSTABLE 3 WING CASTING STAINLESS STEEL HINGES.**

Features:

- Area of application: for profile doors.
- Material: stainless steel EN 1.4301 (type SUS304). Pin made in special type of brass.
- Hinge to be screwed to the door with threaded inserts.
- Maximum adjusted door weight: 100 kgs. Consult Durable Collection for Doors weight more than 150 kgs.
- Supplied with: 1 piece of hinge, 5 screws and 2 inserts.
- Standard finish: satin stainless steel (SSS). Other finishes are available upon request.



16021-3D-130	SIZE
