

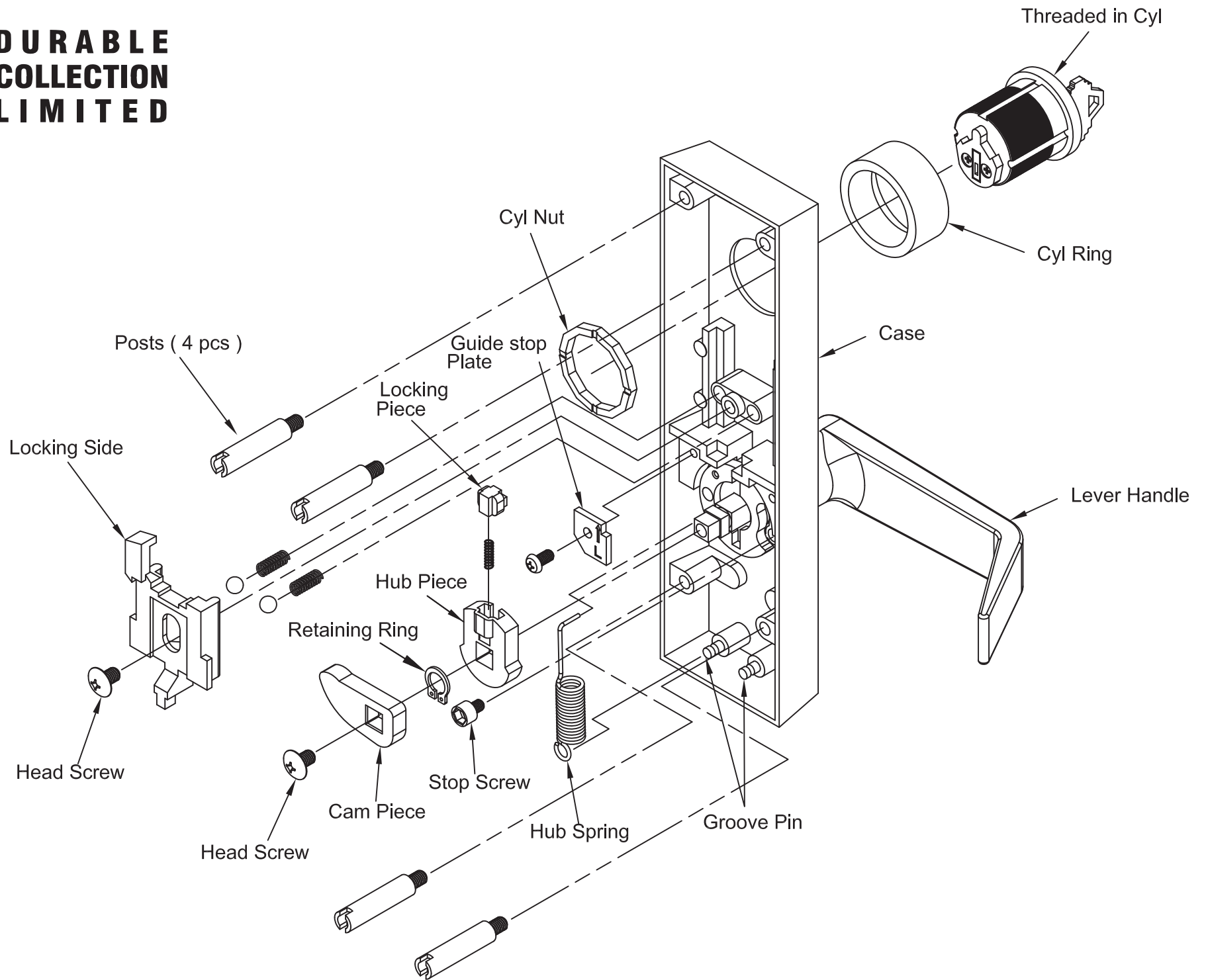
	DT012	DT012P	DT012D	DT012S
	Lockable Lever Trim Key locks & Unlocks Lever	No Cyl, Trim Always Operable	Pull when Push bar locked down Dummy Lever Trim	Key unlock Lever, Key remained on Cyl unless Locked. Cyl Lever Trim
	Entrance	Passage	Dummy	Storeroom
	Attach the collar and mortise cyl to the case with mortise nut, attach case to door thru bolting (4) screws to the chassis, aligning spindle to hub	Attach case to door thru bolting the (4) screws to the chassis, aligning spindle to hub of the Chassis	Attach the collar and dummy cyl to the case with mortise nut, attach case to door thru bolting (4) screws to the chassis,	Attach the collar and mortise cyl to the case with mortise nut, attach case to door thru bolting (4) screws to the chassis, aligning sprindle to hub

**DT012 LEVER TRIM FOR 1320CVR
METHOD OF CHANGING HAND OF LEVER, RHR**

<p>1. Lever Trim shipped and supplied with lever positioned neutral, Non-Handed</p>	<p>2. Unfasten Cam piece</p>	<p>3. Rotate lever to desired hand, RHR, position at 90°</p>	<p>4. Depress & push in the spring loaded locking piece in the "up" position to rotate hub. Make sure spring loaded locking piece click in place & is in line with locking slide to operate</p>	<p>5. Position lever to 30°-45°</p> <p>Horizontal line</p> <p>30°-45°</p> <p>Turn the handle</p>
<p>6. Fasten stop screw on the other side, using hex wrench</p> <p>Horizontal line</p> <p>30°-45°</p> <p>Turn the handle</p>	<p>7. Mount the hub spring on the opposite groove pin</p>	<p>8. Fasten guide stop plate to case at the same side of hub spring</p>	<p>9. Fasten Cam Piece</p> <p>Note: Cam heading left on RHR</p>	<p>10. Done</p>

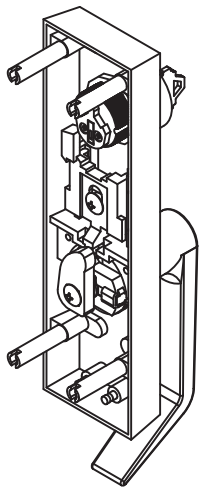
Method for replacing cyl

1. With locking slide in down position, unscrew cyl nut and remove the cyl and ring
2. Replace cyl by reversing above procedure. Make sure that cyl cam points up and correct length of ring is used

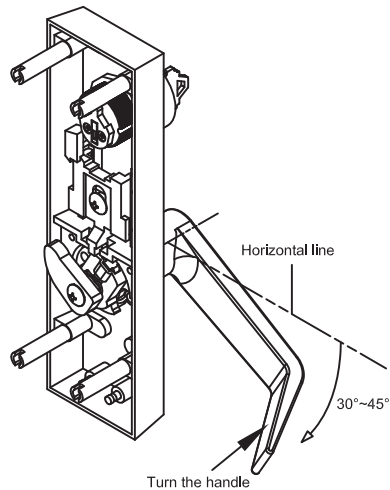


**DT012 LEVER TRIM FOR 1320CVR
METHOD OF CHANGING HAND OF LEVER, LHR**

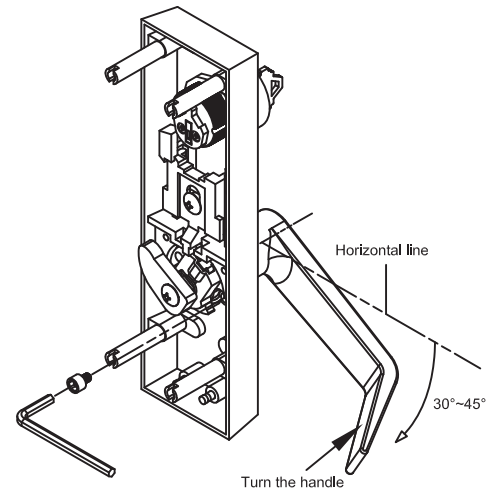
1. Lever Trim shipped and supplied with lever positioned neutral, Non-Handed



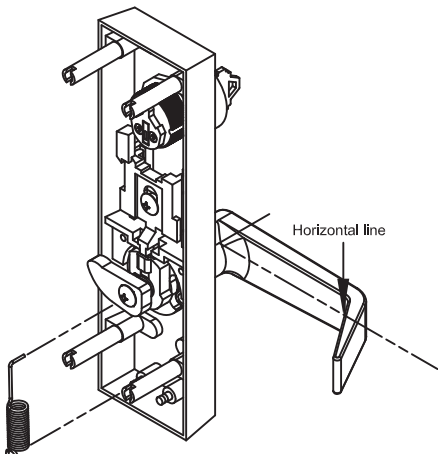
2. Rotate lever handle to LHR, position Lever 30°~45°



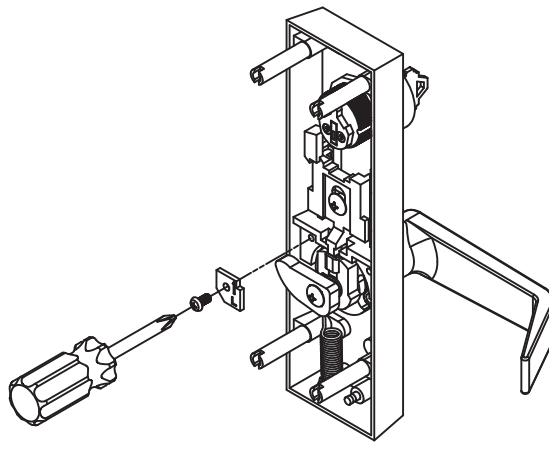
3. Fasten stop screw on the other side using hex wrench



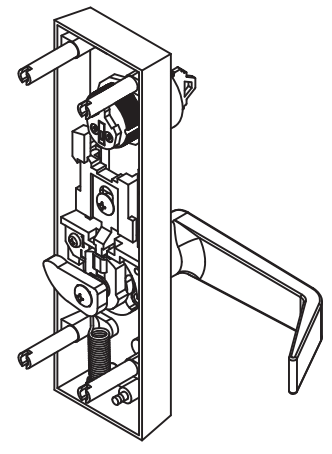
4. Mount the hub spring on the opposite groove pin



5. Fasten guide stop plate to case at the same side of hub spring



6. Done



Method for replacing cyl

1. With locking slide in down position, unscrew cyl nut and remove the cyl and ring
2. Replace cyl by reversing above procedure. Make sure that cyl cam points up and correct length of ring is used