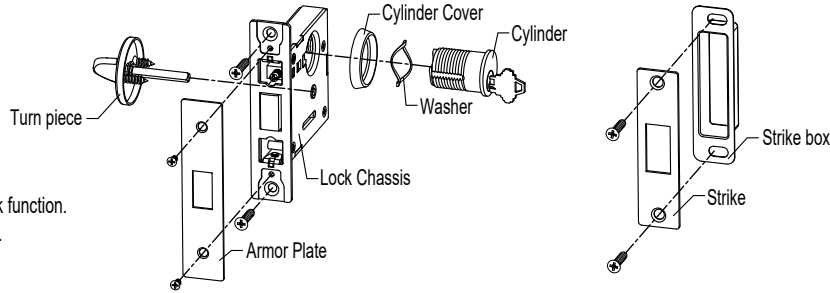


## OVERALL EXPLODED VIEW

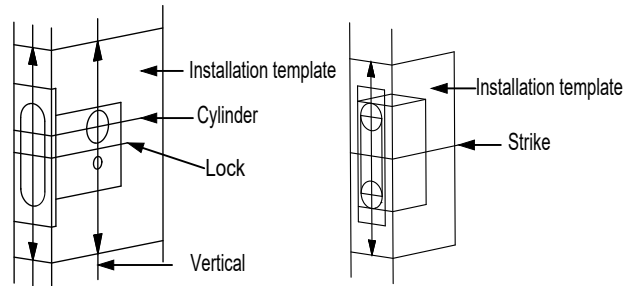


### Important:

Door prep may vary dependant on lock function.  
Refer to installation template for details.

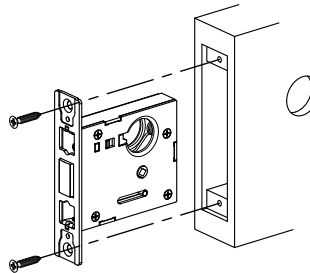
## 1. DOOR AND FRAME PREPARATION

1. Determine the inside & outside of the door.  
Draw a horizontal line on both sides and edge of the door at the desired height above the finished floor.
2. Draw a vertical center line on the door edge .
3. Draw a vertical line on each side of the door at the proper backset to align the template.
4. Position the template on the edge and side of the door.  
Important: Take care to only mark the door face & edge as per required lock function.  
Note: Reference door preparation chart for details.
5. Remove the template, place the lock face against the door edge.  
Trace the cut line of the face plate as a guide for the faceplate routing.
6. Mortise the door for the lock chassis and armor plate as per the instruction on the template.
7. Refer to the template to determine the strike location on the jamb, using the strike as a template, mark and chisel the strike recess.  
Drill screw holes and fasten.



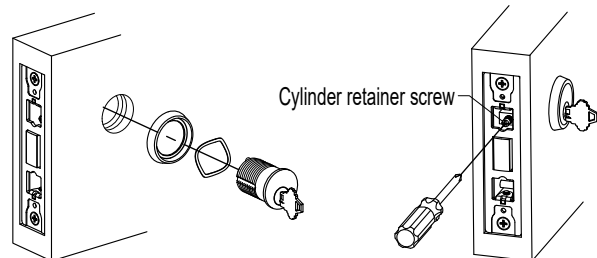
## 2. INSTALL CHASSIS

1. Place the chassis into the door edge.
2. Secure with two combo screws



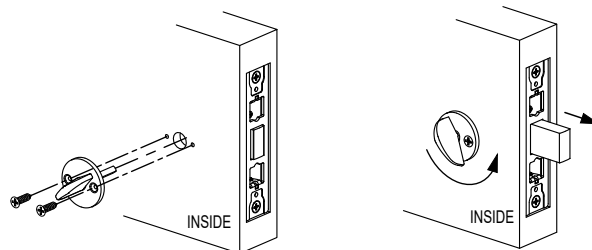
## 3. INSTALL CYLINDER

1. Slide the wave washer and cylinder ring over the cylinder.
2. Thread the cylinder into the face of the door, oriented with the plug at bottom center.
3. Tighten the cylinder in place using the cylinder retainer screws.



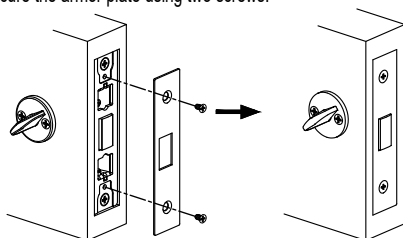
## 4. INSTALL THUMBTURN

1. Insert turn piece, make sure spindle engages lock chassis properly, then fasten with two screws.



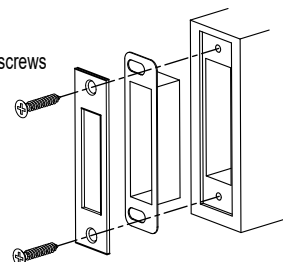
## 5. INSTALL ARMOR PLATE

1. Secure the armor plate using two screws.



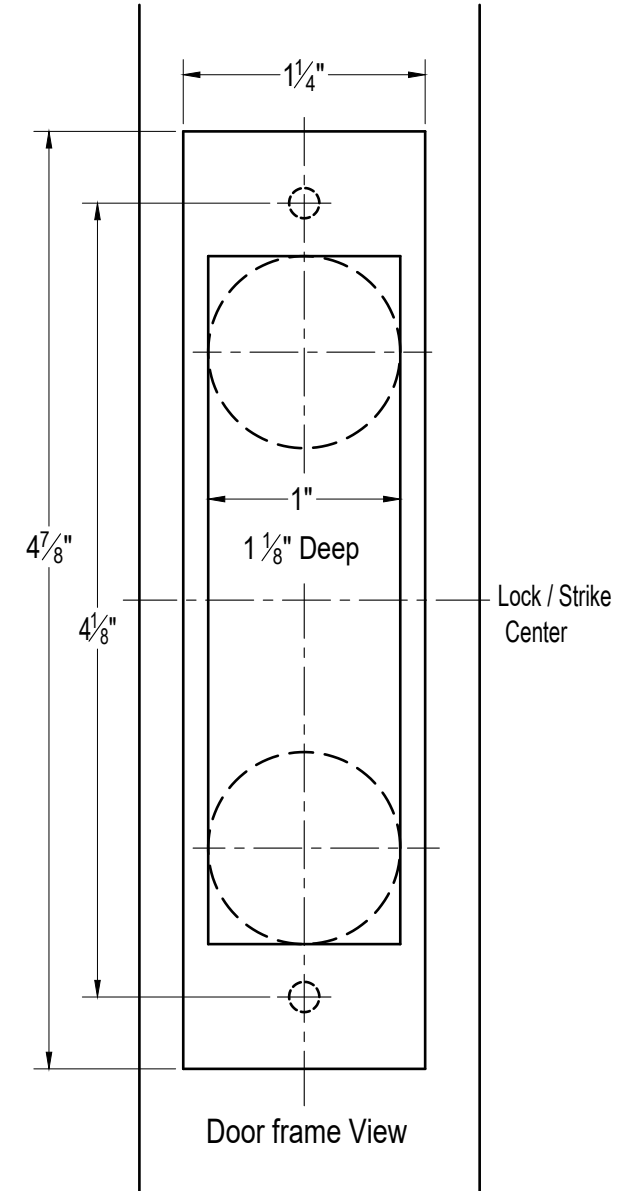
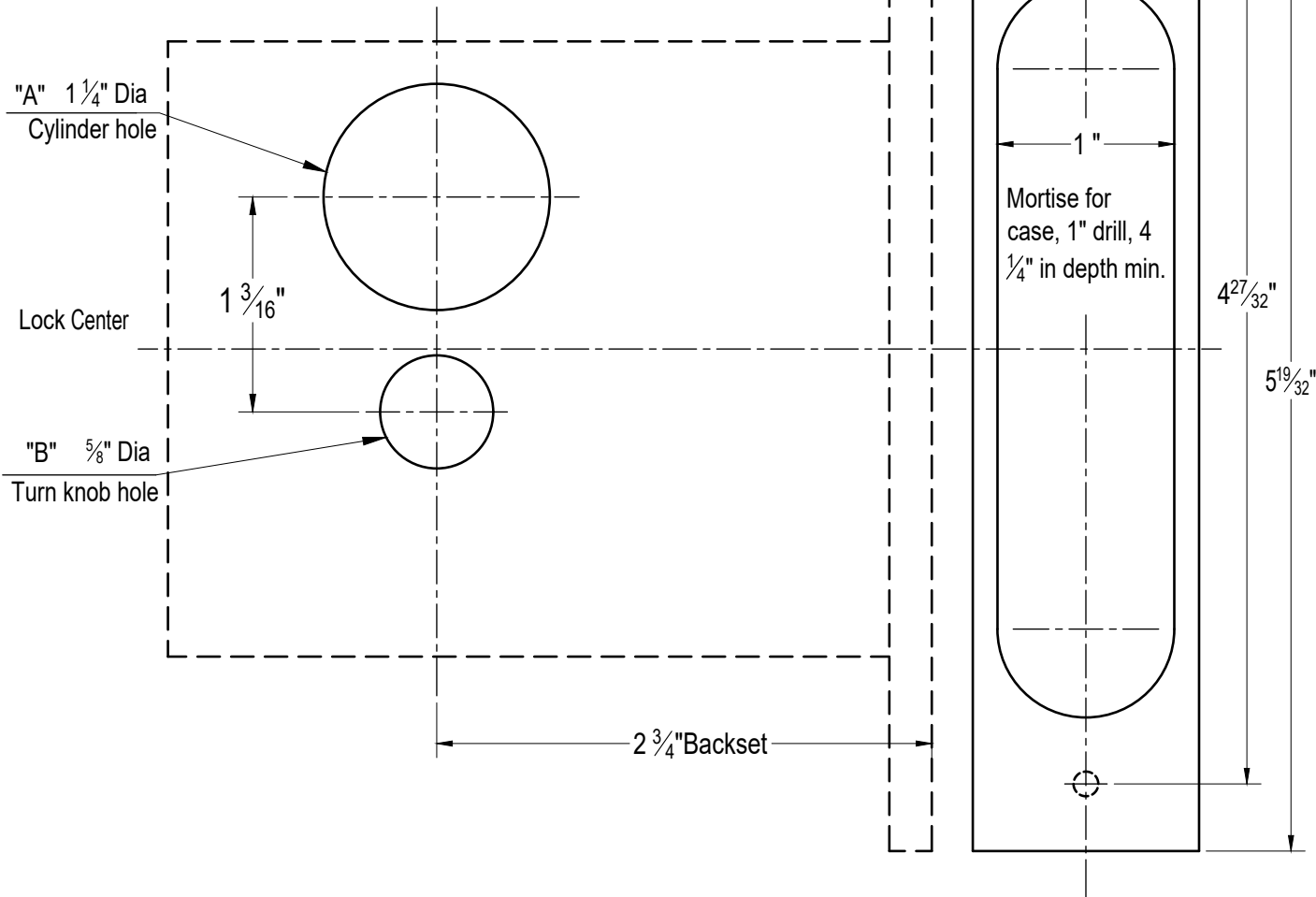
## 6. INSTALL STRIKE

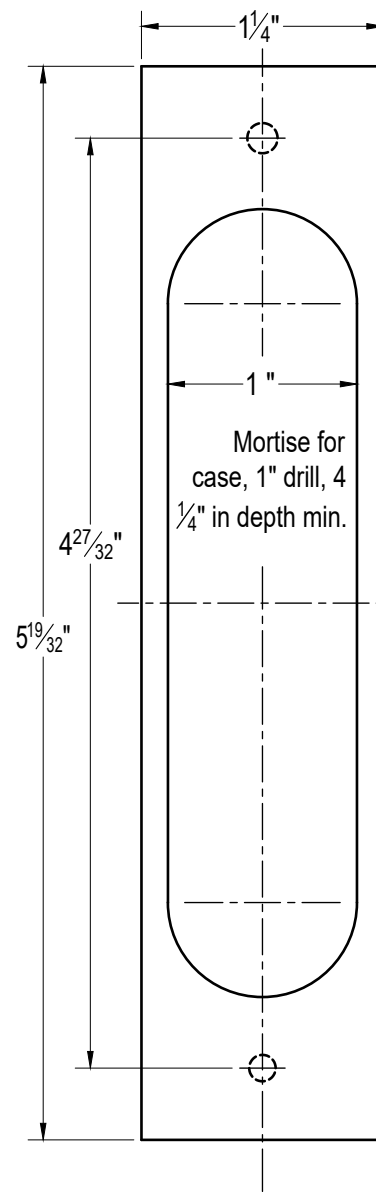
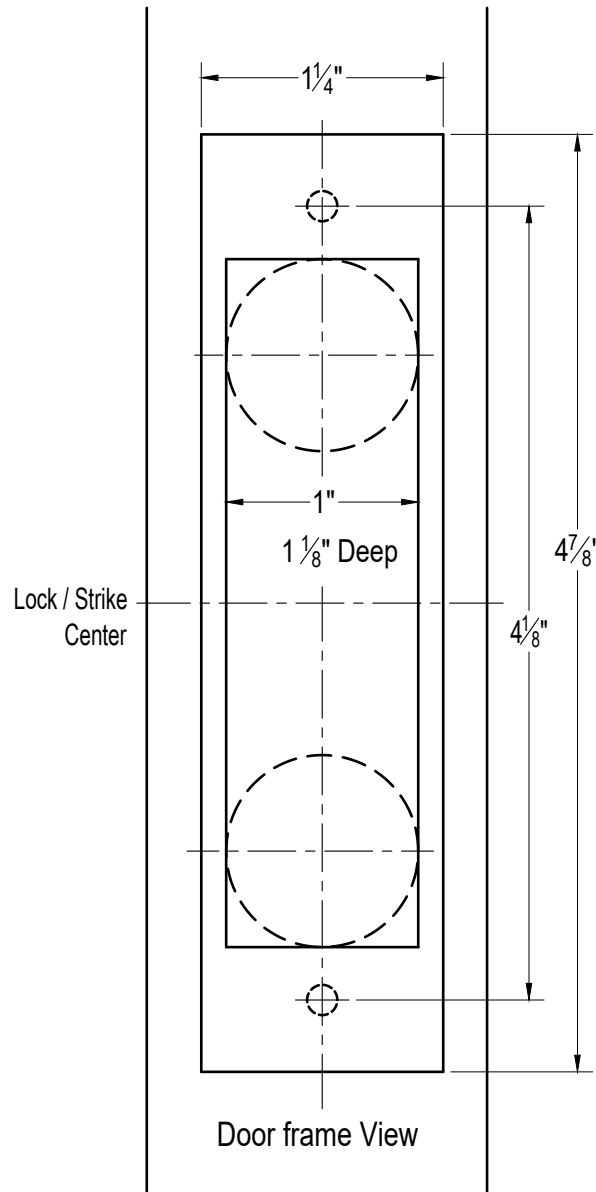
1. Insert the dust box then strike
2. Secure each with two combo screws



# DML1016L/17L/18L TEMPLATE

SERIES	OUTSIDE		INSIDE	
	Cylinder hole	Turn knob hole	Cylinder hole	Turn knob hole
Lock function	A	B	A	B
F16	•		•	
F17	•			•
F18	•			





SERIES	OUTSIDE		INSIDE	
	Cylinder hole	Turn knob hole	Cylinder hole	Turn knob hole
Lock function	A	B	A	B
F16	•		•	
F17	•			•
F18	•			

