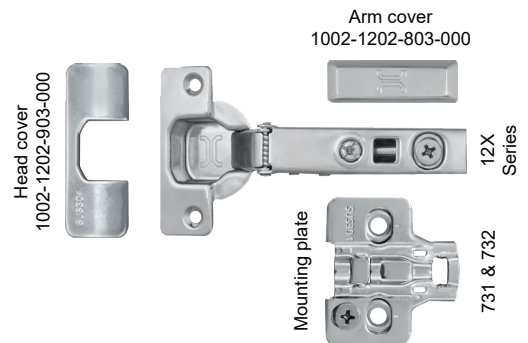


ITEM CODE: 1002-1202-12X SERIES

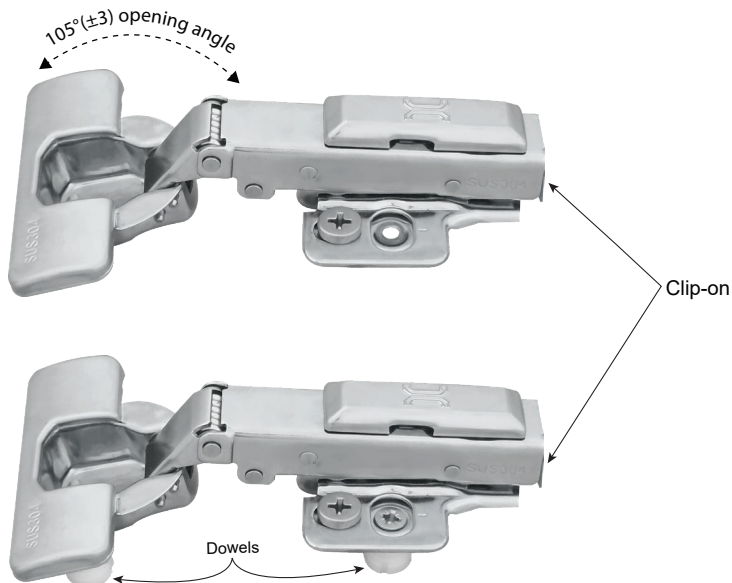
CLIP-ON CABINET HINGE, OPENING ANGLE: 105° (±3)

Features:

- For leaf thickness 14-22 mm.
- Opening angle **105°(±3)**, soft-close hinge.
- One-way hinge.
- Damper (buffer) in copper material.
- Base material: Hinge, mounting plate, arm cover & head cover are made in stainless steel (SUS304).
- Finish: Polished stainless steel (PSS).
- Tool-free (Clip-on) for easy assembly.
- Cup screw fixing distance: 48 mm.
- 3D adjustment (with mounting plate).
- Compliant to EN15570 - 40,000 cycles.



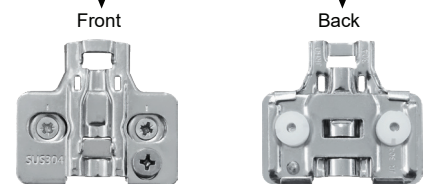
Illustrated hinge 12X Series with mounting plate 731 & 732 Series



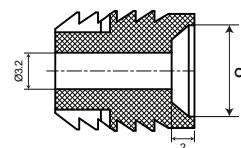
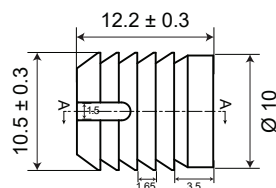
Illustrated mounting plate 701 Series



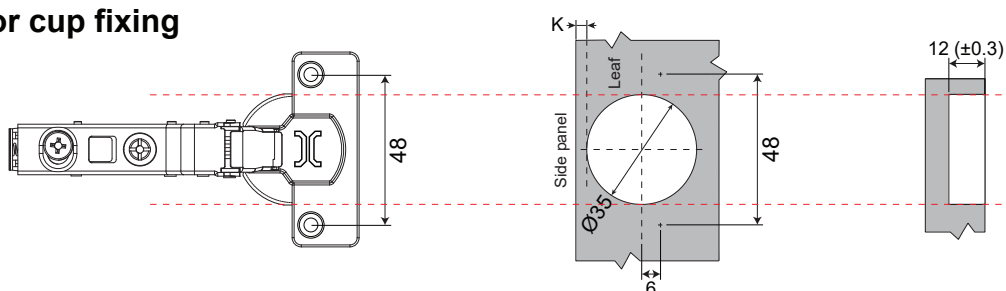
Illustrated mounting plate 702 Series (with dowel)



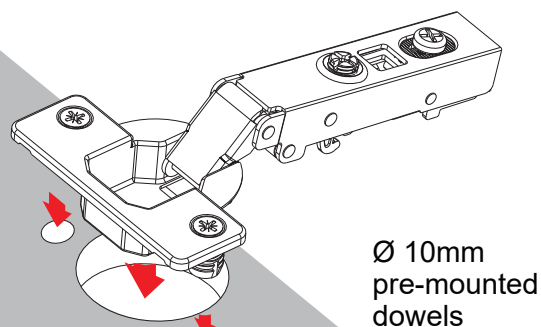
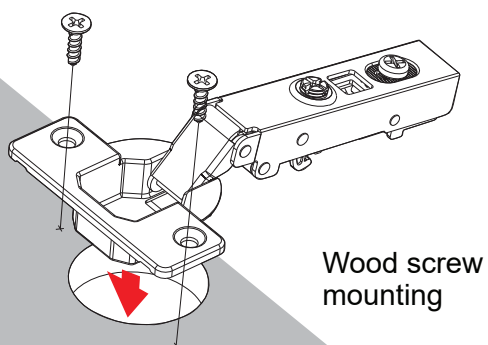
Dowel dimensions
Ø 10 mm



Drilling pattern for cup fixing

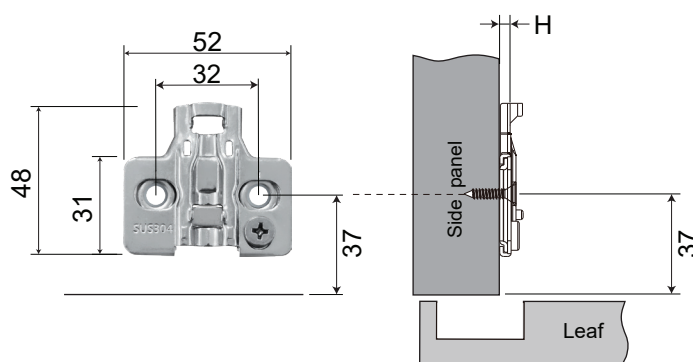


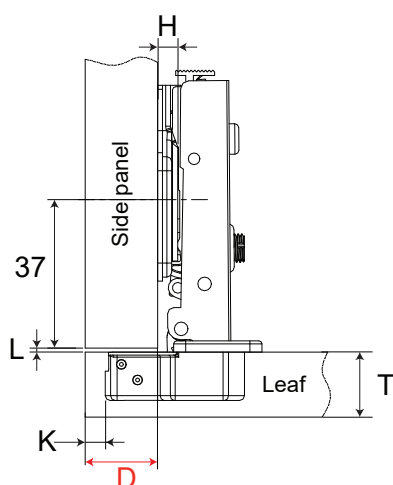
Cup installation



Mounting plates features:

- Wood screw: $\varnothing 4 \times 15.5$ mm.
- Fixing screw drilling space: 32 mm.
- To side panel edge: 37 mm (for full & half overlay).
- Adjustment range: -1.9 mm, +1.9 mm.
- Base material: Stainless steel (SUS304).
- Finish: Polished stainless steel (PSS).
- Height:
 - H0: 1002-1202-731-000
 - 1002-1202-732-000 (with dowel)



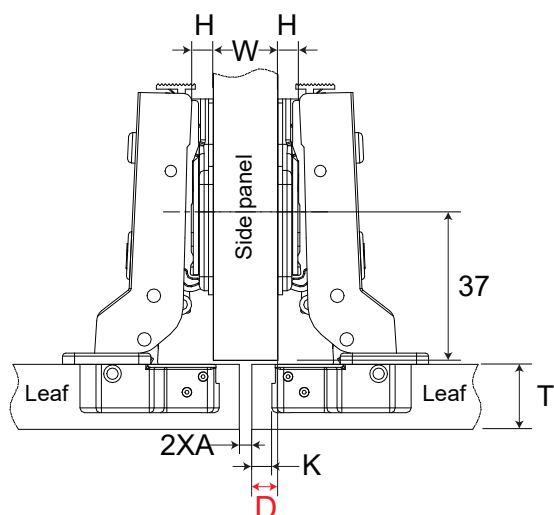


FULL OVERLAY

Art #:1002-1202-121-000 &
1002-1202-124-000 (with dowel)

$$H = 14 + K - D$$

D \ K	3	4	5	6	7
0	17	18	19	20	21
2	15	16	17	18	19
4	13	14	15	16	17

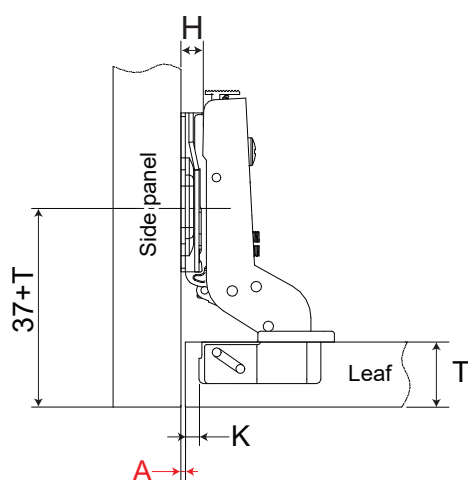


HALF OVERLAY

Art #:1002-1202-122-000 &
1002-1202-125-000 (with dowel)

$$H = 4 + K - D$$

D \ K	3	4	5	6	7
0	7	8	9	10	11
2	5	6	7	8	9
4	3	4	5	6	7



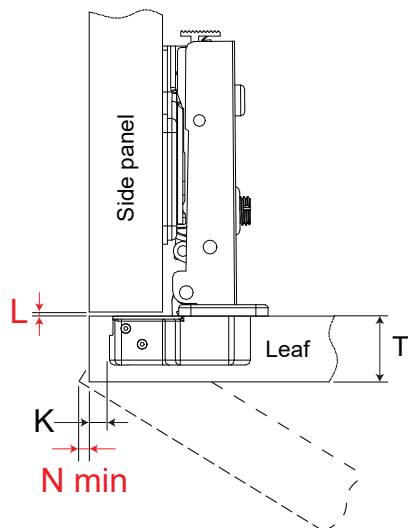
INSET

Art #:1002-1202-123-000 &
1002-1202-126-000 (with dowel)

$$H = -4 + K + A$$

A \ K	3	4	5	6	7
0	1	0	-1	-2	-3
2	3	2	1	0	-1
4	5	4	3	2	1

Minimum reveal table



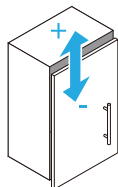
K= Boring distance
T= Leaf thickness
N= Minimum gap
L= Gap between leaf & side panel

N	T	14	15	16	17	18	19	20	21	22
K										
3	0.3	0.5	0.7	0.9	1.2	1.5	1.8	2.2	2.6	
4	0.3	0.5	0.7	0.9	1.1	1.4	1.8	2.1	2.5	
5	0.2	0.4	0.6	0.9	1.1	1.4	1.7	2.0	2.4	
6	0.2	0.4	0.6	0.8	1.1	1.3	1.6	2.0	2.4	
7	0.2	0.4	0.5	0.8	1.0	1.3	1.6	1.9	2.3	

L	T	14	15	16	17	18	19	20	21	22
K										
3	1.0	1.0	1.0	1.0	1.0	1.0	1.0	1.0	1.0	
4	1.0	1.0	1.0	1.0	1.0	1.0	1.0	1.0	1.2	
5	1.0	1.0	1.0	1.0	1.0	1.3	1.5	1.8	2.0	
6	1.0	1.3	1.5	1.8	2.0	2.3	2.5	2.8	3.0	
7	2.0	2.3	2.5	2.7	3.0	3.2	3.5	3.7	3.9	

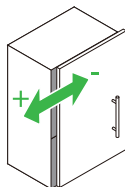
Note: Parameters (showing on tables) are based on right-angle leaf edge. If the leaves having round corner edges, the parameters value will be reduced.

Hinge adjustment



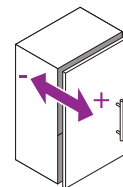
Height adjustment

Adjust the mounting plate on panel to adjust the leaf's height.
Adjust range: -1.9mm, +1.9mm.



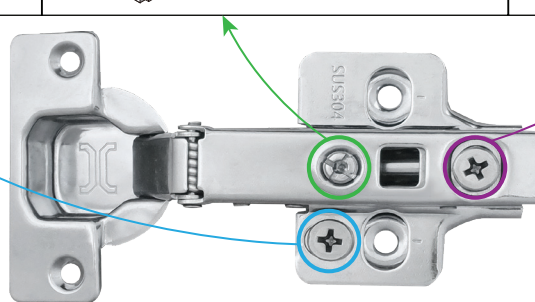
Overlay adjustment

Rotate lateral screw to increase or decrease leaf overlay.
Adjust range: -3mm, +3mm.



Depth adjustment

Rotate depth screw to adjust leaf gap.
Adjust range: -1.9mm, +1.9mm.



Note: The reference adjustment range is the product design range. The actual size of the cabinet and the drilling method may have a certain impact on the parameters.

Hinges distribution based on leaf height and weight

