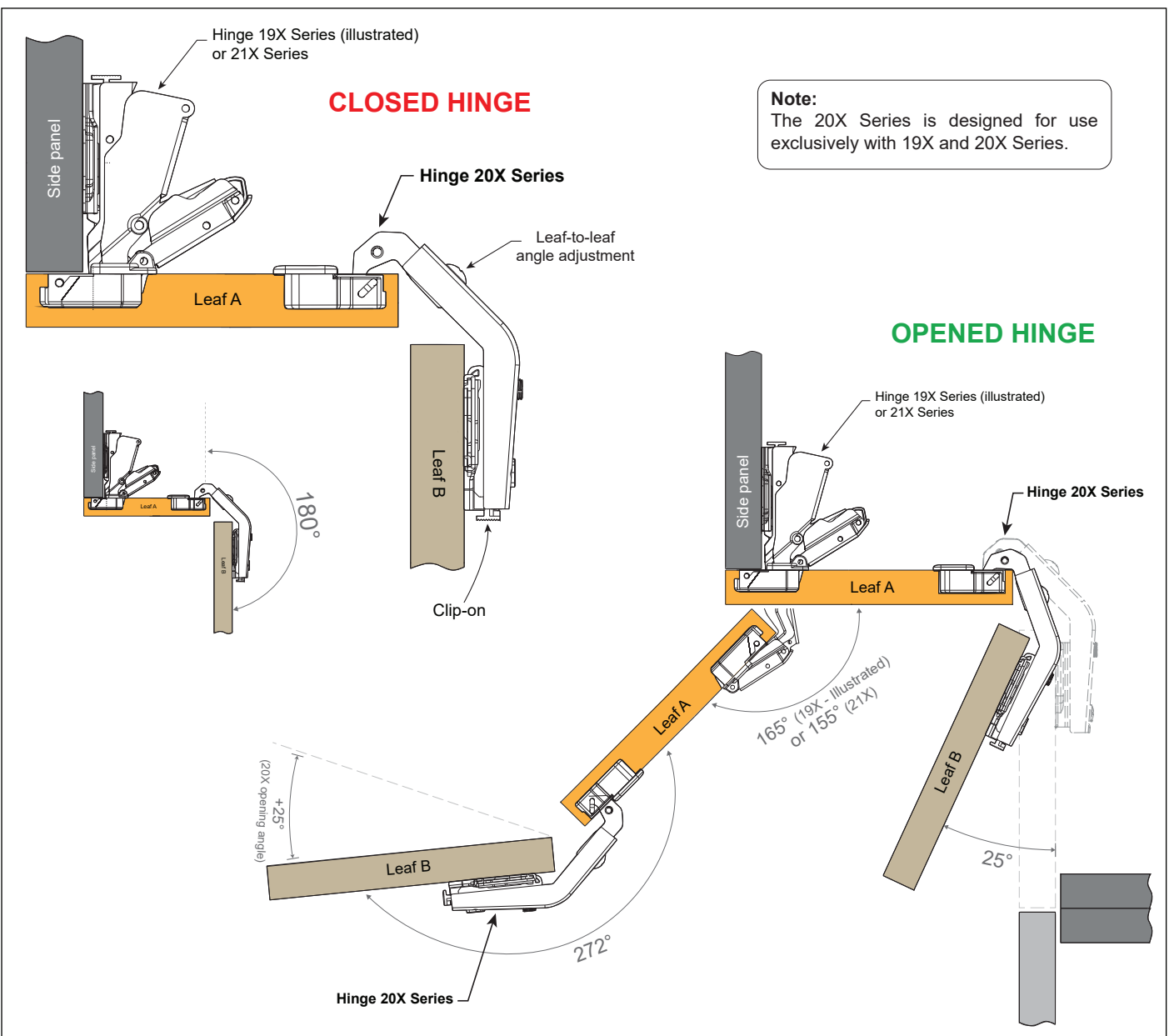
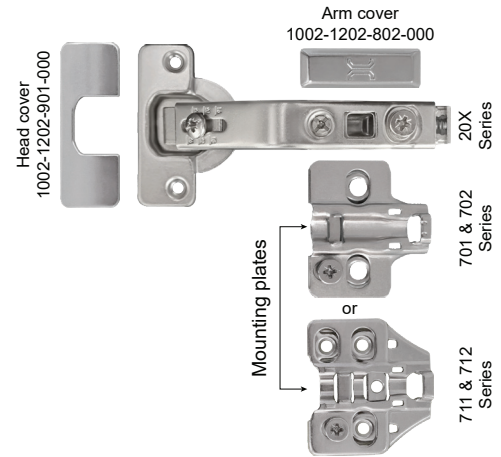


ITEM CODE: 1002-1202-20X SERIES

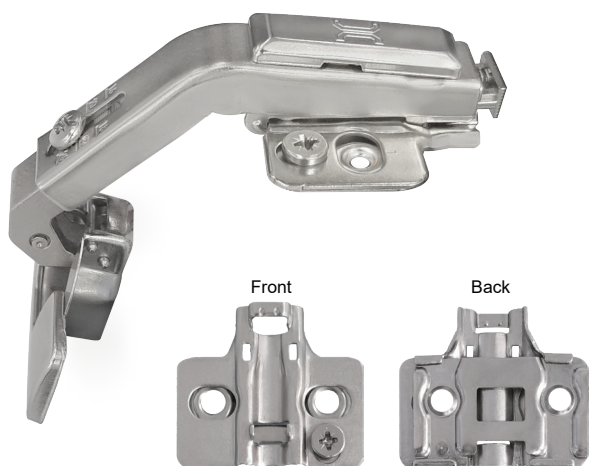
CLIP-ON CABINET HINGE, CLOSED ANGLE: $+180^\circ$ | OPENING ANGLE: $105^\circ(\pm 3)$

Features:

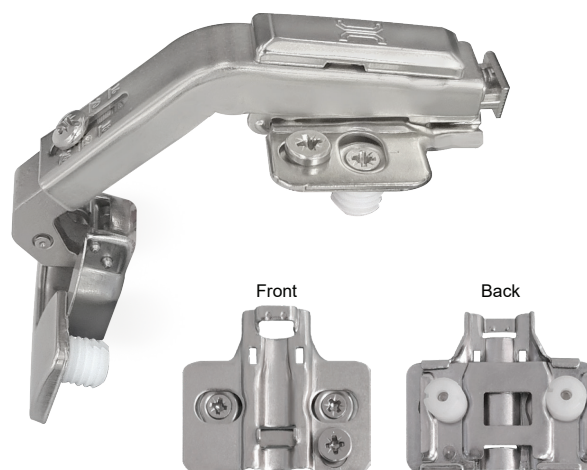
- For leaf thickness 14-22 mm.
- **$+180^\circ$** angled hinge, opening angle 25° .
- Engineered for use with bi-fold door applications.
- Unsprung hinge.
- Base material: Cold rolled steel cup & arm.
- Finishes: - Copper (CU) & nickel plated.
- Optional: Copper (CU) & matt black plated.
- Tool-free (Clip-on) for easy assembly.
- Cup screw fixing distance: 48 mm.
- 3D adjustment (with mounting plate), in addition to leaf-to-leaf angle adjustment.
- Compliant to EN15570 - 40,000 cycles.



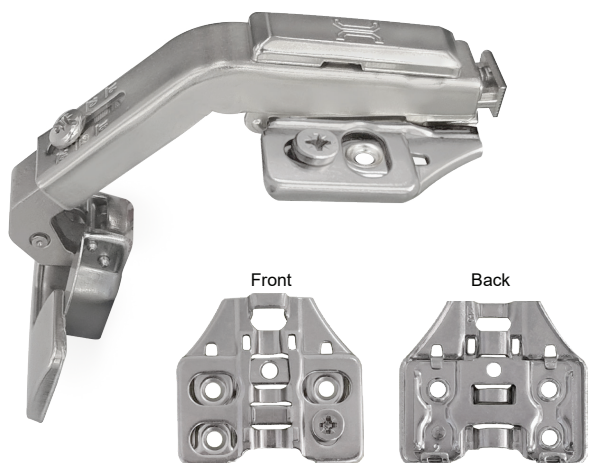
Cabinet hinge 20X Series with mounting plate 701 Series



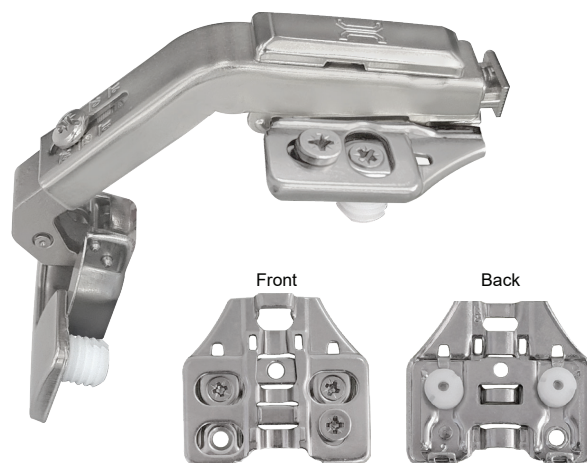
Cabinet hinge 20X Series with mounting plate 702 Series (with dowel)



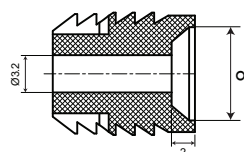
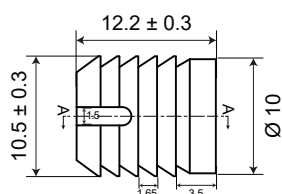
Cabinet hinge 20X Series with mounting plate 711 Series



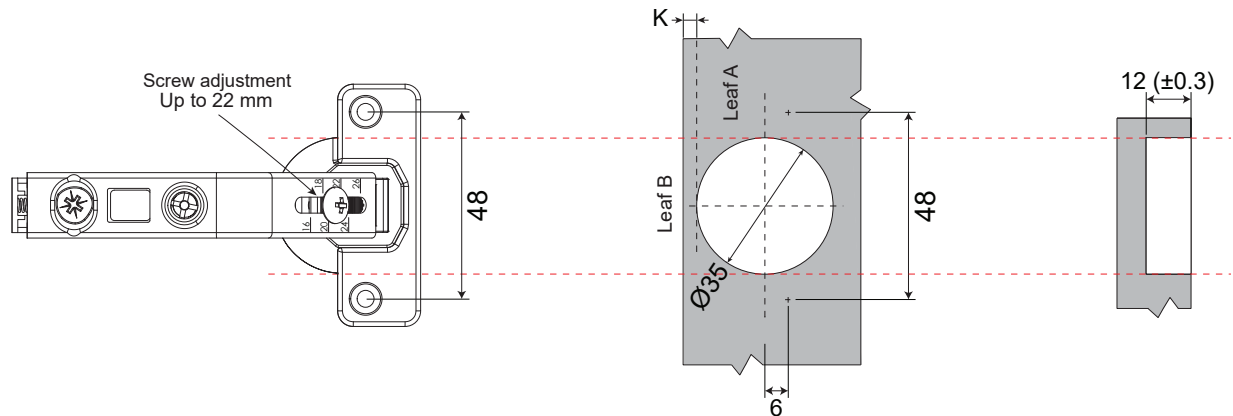
Cabinet hinge 20X Series with mounting plate 712 Series (with dowel)



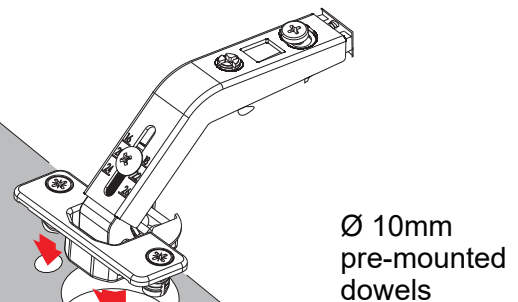
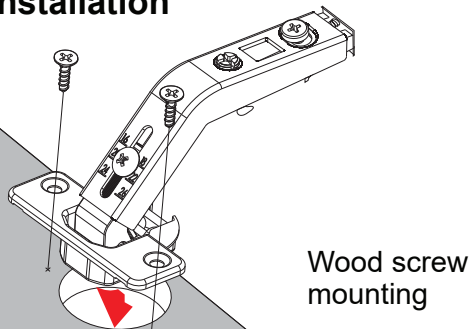
Dowel dimensions
Ø 10 mm



Drilling pattern for cup fixing



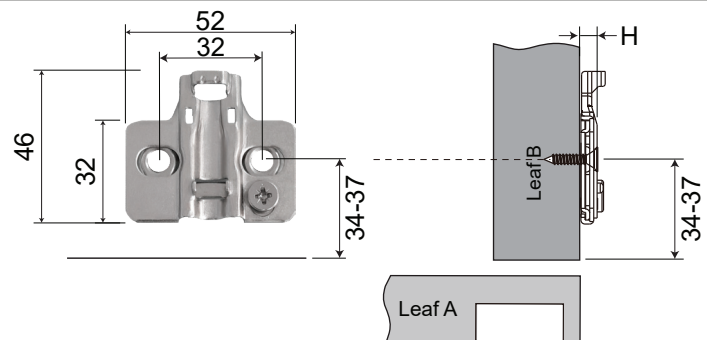
Cup Installation



Mounting plates features:

- Wood screw: Ø 4*15.5 mm.
- Fixing screw drilling space: 32 mm.
- To leaf B edge: 34 mm to 37 mm.
- Adjustment range: -1.9 mm, +1.9 mm.
- Base material: Cold rolled steel.
- Finishes: - Copper (CU) & nickel plated.
- Optional: Copper (CU) & matt black plated.
- Height:

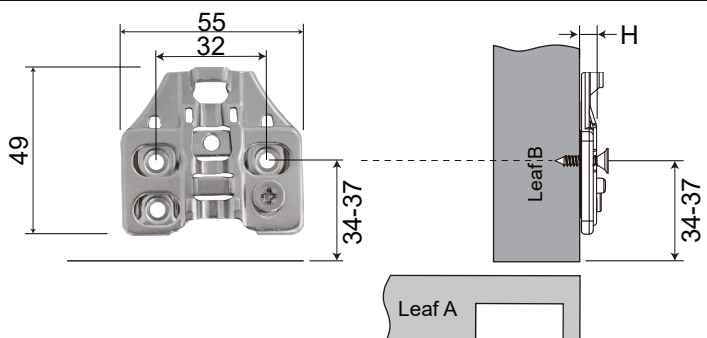
H0: 1002-1202-701-000		1002-1202-702-000 (with dowel)
H2: 1002-1202-701-002		1002-1202-702-002 (with dowel)
H4: 1002-1202-701-004		1002-1202-702-004 (with dowel)

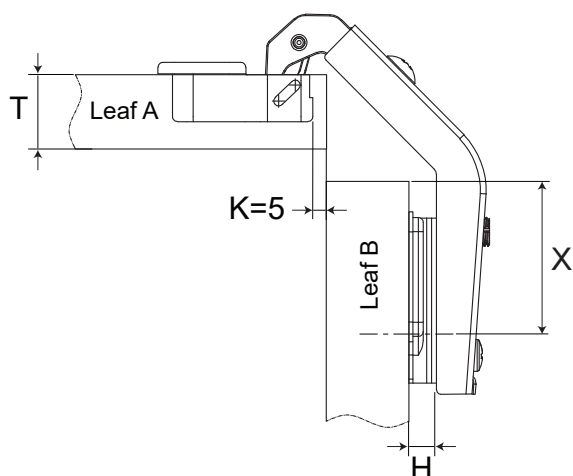


Mounting plates features:

- Wood screw: Ø 4*15.5 mm.
- Fixing screw drilling space: 32 mm.
- To leaf B edge: 34 mm to 37 mm.
- Adjustment range: -1.9 mm, +1.9 mm.
- Base material: Cold rolled steel.
- Finishes: - Copper (CU) & nickel plated.
- Optional: Copper (CU) & matt black plated.
- Height:

H0: 1002-1202-711-000		1002-1202-712-000 (with dowel)
H2: 1002-1202-711-002		1002-1202-712-002 (with dowel)
H4: 1002-1202-711-004		1002-1202-712-004 (with dowel)



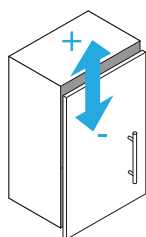


FULL OVERLAY

Art #:1002-1202-200-180 &
1002-1202-207-180 (with dowel)

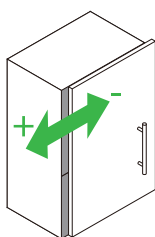
T	Leaf thickness < 18mm	22mm > Leaf thickness > 18mm
H	2	0
X	37	37

Hinge adjustment



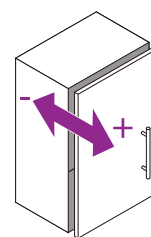
Height adjustment

Adjust the mounting plate on panel to adjust the leaf's height.
Adjust range: -1.9mm, +1.9mm.



Overlay adjustment

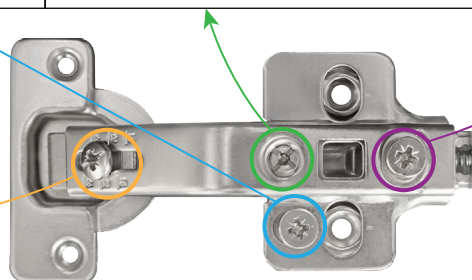
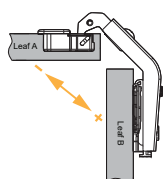
Rotate lateral screw to increase or decrease leaf overlay.
Adjust range: -2.5mm, +2.5mm.



Depth adjustment

Rotate depth screw to adjust leaf gap.
Adjust range: -1.9mm, +1.9mm.

Leaf-to-leaf angle adjustment



Notes:

- Mounting plates 701 series, 702 series, 711 series & 712 series have the same adjust ranges.
- The reference adjustment range is the product design range. The actual size of the cabinet and the drilling method may have a certain impact on the parameters.

Hinges distribution based on leaf height and weight

