

INSTALLATION INSTRUCTIONS

Art#: DCR3-X DOOR CLOSER

Unit: mm

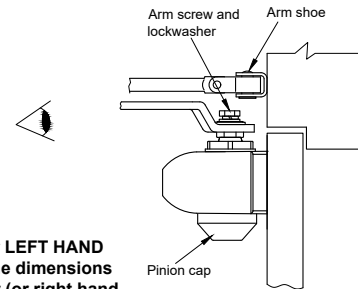
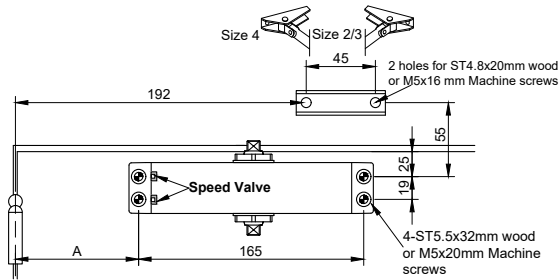
STANDARD INSTALLATION

Closer mounted on door on pull side

CAUTION

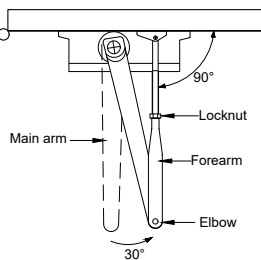
An improperly installed or incorrectly adjusted door closer can result in property damage or personal injury. Follow these instructions carefully to prevent misapplication or misadjustment.

Size	DIM.A	Recommended Door width	Recommended Door Weight	Max. Opening
2	66 mm	850 mm	25-45 KGS	180°
3	82 mm	950 mm	45-65 KGS	180°
4	92 mm	1100 mm	65-85 KGS	180°

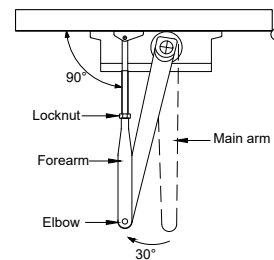


RIGHT HAND DOOR (or LEFT HAND REVERSE) shown. Same dimensions apply for left hand door (or right hand reverse) measured from hinge center.

POSITION OF ARMS AND SETTINGS



Right Hand door (or left hand reverse).

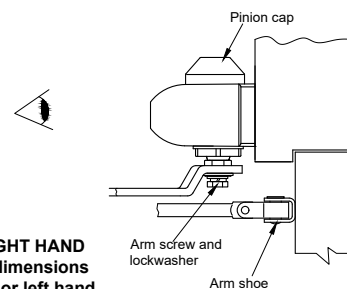
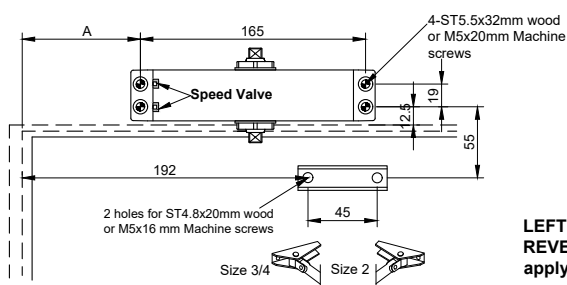


Left hand door (or right hand reverse).

TOP JAMB INSTALLATION

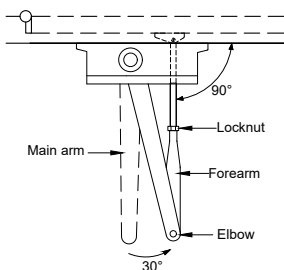
Closer mounted on top jamb on push side of door.

Size	DIM.A	Recommended Door width	Recommended Door Weight	Max. Opening
2	66 mm	850 mm	25-45 KGS	120°
3	82 mm	950 mm	45-65 KGS	120°
4	145 mm	1100 mm	65-85 KGS	110°

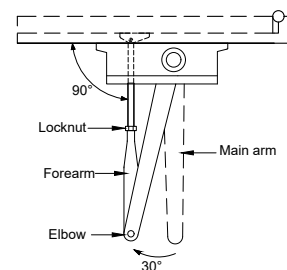


LEFT HAND DOOR (or RIGHT HAND REVERSE) shown. Same dimensions apply for right hand door (or left hand reverse) measured from hinge center.

POSITION OF ARMS AND SETTINGS



Left Hand door (right hand reverse).



Right hand door (left hand reverse).

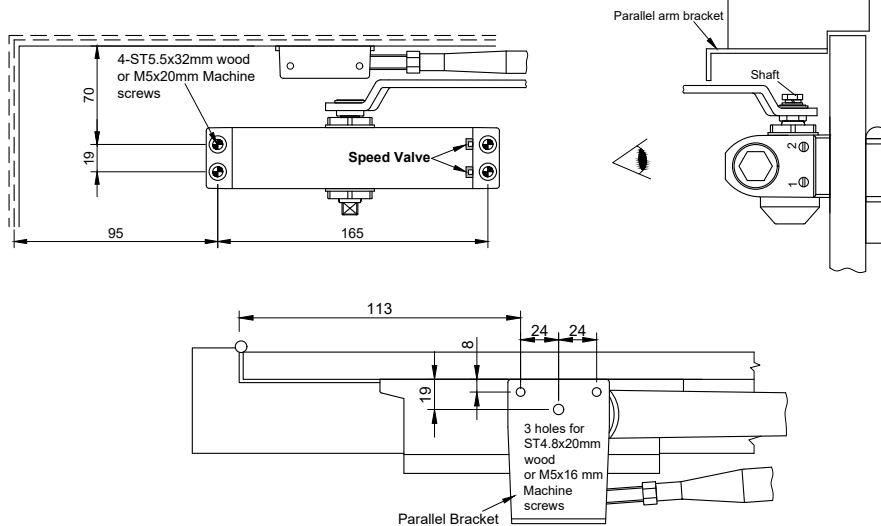
INSTALLATION INSTRUCTIONS

Art#: DCR3-X DOOR CLOSER

Unit: mm

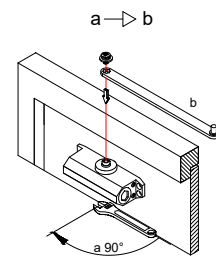
PARALLEL ARM INSTALLATION

Closer mounted on door on push side



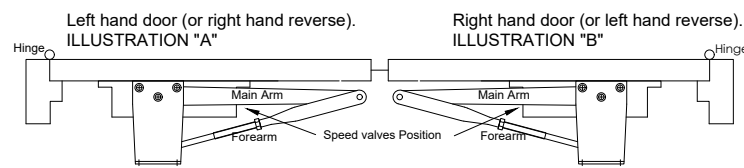
Size	Recommended Door width	Recommended Door Weight	Max. Opening
3	950 mm	45-65 KGS	120°

Using a wrench on the square shaft on bottom of closer, rotate shaft approximately 90° toward hinge edge of door. Hold and place main arm on shaft on top of closer at proper position as illustrated. FOR LEFT HAND DOOR or RIGHT HAND REVERSE (illustration "A"). FOR RIGHT HAND DOOR or LEFT HAND REVERSE (illustration "B"). Tighten arm screw with lockwasher securely.



POSITION OF ARMS AND SETTINGS

Attention: Adjust the length of forearm until the main arm is parallel to door leaf.



INSTRUCTIONS:

Step 1

- Check door handing.
- Select type of installation.

Step 2

- See instructions for installation you have selected.
- Follow instructions for correct application and adjustment.

Step 3

- Apply closer body and forearm (or parallel bracket and forearm) to door and frame as shown.
- Place main arm on shaft at proper index as shown and tighten arm screw with Lockwasher securely.
- Adjust length of forearm as shown and attach to main arm at elbow and tighten locknut bolt.

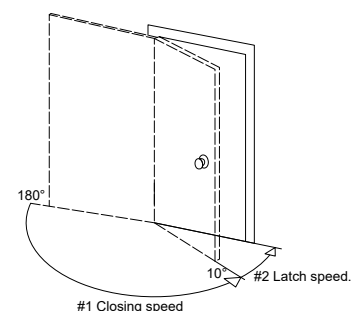
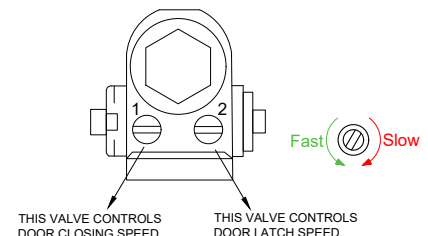
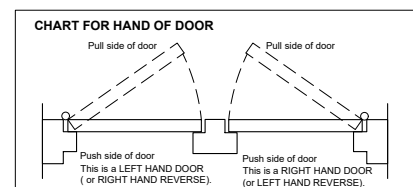
Step 4

Fixing pinion cap on shaft at unused side.

Step 5

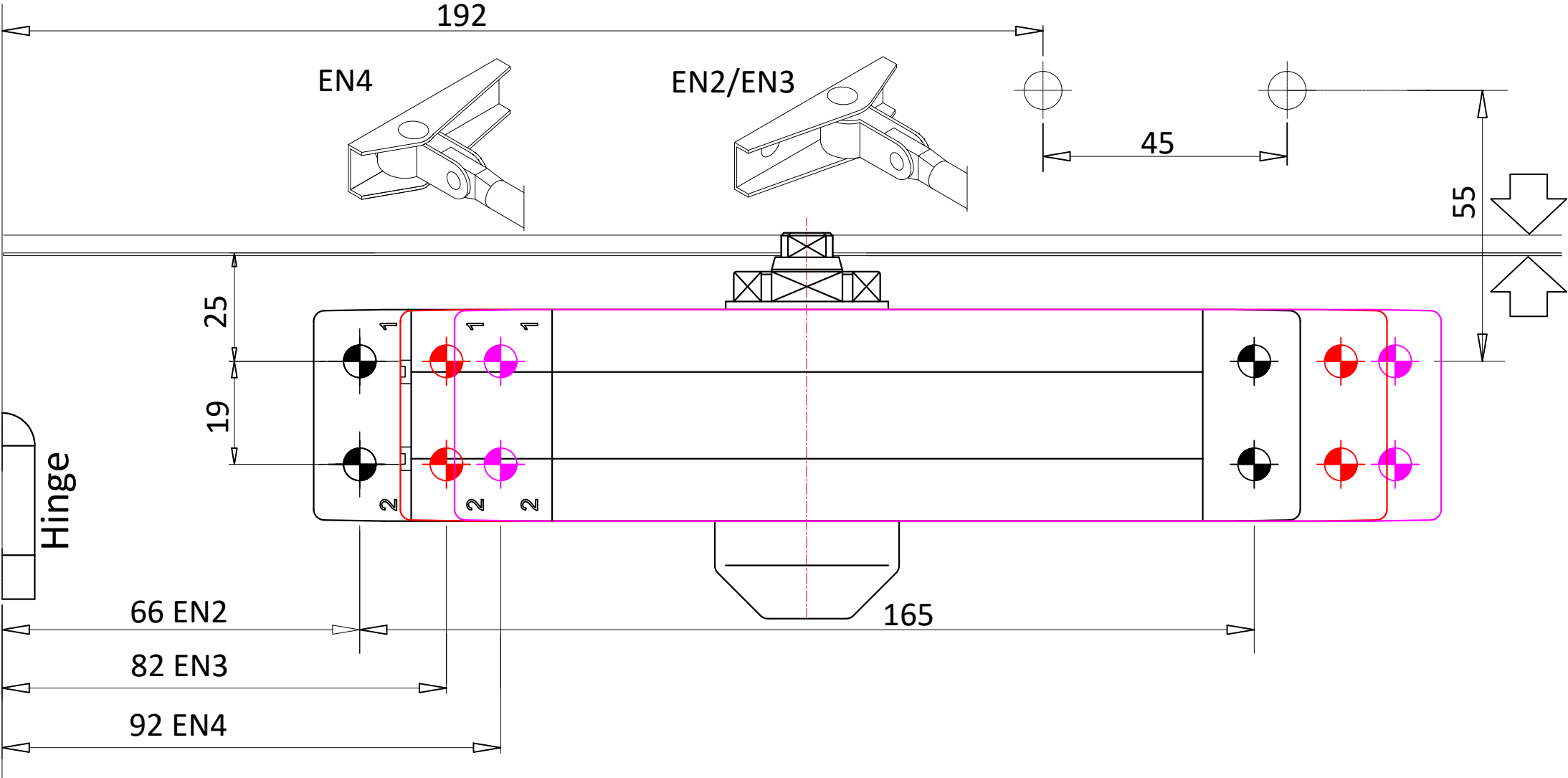
Door closing and latching speed are controlled by #1, #2 speed. Regulate screw separately.

- Turn clockwise to decrease the speed.
- Turn counter-clockwise to increase the speed.





WARNING:
PLEASE PRINT AT ACTUAL SIZE,
DO NOT SCALE TO FIT.





WARNING:
PLEASE PRINT AT ACTUAL SIZE,
DO NOT SCALE TO FIT.

